

Networking / Server Rack



Technical Specifications

Height in "U"	Overall Height (mm & Inch)		Usable Height (mm & Inch)		Overall Depth (mm & Inch)		Usable Depth (mm & Inch)		Overall Width (mm & Inch)		Usable Width (mm & Inch)	
2U	150mm	5.91"	89mm	3.50"	400mm	15.74"	340mm	13.38"	550mm	21.65"	482.6mm	19"
4U	240mm	9.45"	178mm	7"	400mm	15.74"	340mm	13.38"	550mm	21.65"	482.6mm	19"
6U	330mm	12.99"	267mm	10.51"	400mm	15.74"	340mm	13.38"	550mm	21.65"	482.6mm	19"
					500mm	19.68"	340mm	13.38"	550mm	21.65"	482.6mm	19"
9U	465mm	18.31"	399mm	15.71"	400mm	15.74"	340mm	13.38"	550mm	21.65"	482.6mm	19"
					500mm	19.68"	340mm	13.38"	550mm	21.65"	482.6mm	19"
12U	595mm	23.42"	534mm	21.02"	400mm	15.74"	340mm	13.38"	550mm	21.65"	482.6mm	19"
					500mm	19.68"	340mm	13.38"	550mm	21.65"	482.6mm	19"
15U	730mm	28.74"	667mm	26.25"	400mm	15.74"	340mm	13.38"	550mm	21.65"	482.6mm	19"
					500mm	19.68"	340mm	13.38"	550mm	21.65"	482.6mm	19"

Features of Wall Mount Enclosure

- Sturdy steel welded construction
- 1.0mm thick powder coated steel frame and 2 mm thick mounting angles.
- Advanced cooling techniques to eliminate the heat build up associated with increasing heat density.
- Engineered cable management solutions to efficiently control the increasing density of in/out cabling.
- Ideal for networking applications
- Front glass door key lock
- Top and bottom cover with cable in/out provision
- Door gasket for environmental sealing.
- Provision for wall mounting with rear open.
- Maximum static loading capacity up to 40 kg.
- Available in RAL 7035 light grey colors (black colors optional)

Accessories

Cable Managers (1U /2U)	: Horizontal & Vertical MS & PVC
Fixed shelf / cantilever shelf	: 375mm/255mm/ 400mm
Fan Housing Units	: 1 Fan & 2 Fan Positioning Option.
Power Distribution Unit	: Horizontal & vertical 6 & 5 point (5/15A option.)
Blank Panels	: 1U/2U/3U/4U
Equipment Fastener	: Hardware set (packet of 10 cage nuts)

Enclosures Sizes

Single Section

Height Available	: 2U, 4U, 6U, 9U, 12U, 15U.
Width X Depth	: 550mmX400mm, 550X500mm, 550mmx600mm.

Double Section

Height Available	: 6U, 9U, 12U, 15U,
Width X Depth	: 550mm X 500m

Floor Standing NetWorking & Server Racks

Introducing Floor Standing Rack series in corporate advance features, all racks of this series consist of four Vertical CRCA Steel pillars which are connected solidly to two welded steel end- frames. Floor Standing Data Rack is flexible product and can be customized as per equipment need specially engineered to address the growing need of housing rack mount servers, tower server, computer networking panel, CCTV / DVR / VOIP / AV equipments, testing equipment & other 19" electronic satellite and telecom equipments etc.





Height in "U"	Overall Height (mm) & Inch		Usable Height (mm & Inch)		Overall Depth (mm & Inch)		Usable Depth (mm & Inch)		Overall Width (mm & Inch)		Usable Width (mm & Inch)	
	mm	Inch	mm	Inch	mm	Inch	mm	Inch	mm	Inch	mm	Inch
18U	885mm	34.84"	801mm	31.54"	600mm	23.62"	530mm	20.87"	600mm	23.62"	482.6mm	19"
24U	1150mm	45.28"	1068mm	42.05"	600mm	23.62"	530mm	20.87"	600mm	23.62"	482.6mm	19"
					800mm	31.50"	730mm	28.74"	600mm	23.62"	482.6mm	19"
					1000mm	39.37"	930mm	36.61"	600mm	23.62"	482.6mm	19"
27U	1285mm	50.59"	1201mm	47.28"	600mm	23.62"	530mm	20.87"	800mm	31.50"	482.6mm	19"
					800mm	31.50"	730mm	28.74"	800mm	31.50"	482.6mm	19"
					1000mm	39.37"	930mm	36.61"	800mm	31.50"	482.6mm	19"
32U	1510mm	59.45"	1410mm	55.51"	600mm	23.62"	530mm	20.87"	800mm	31.50"	482.6mm	19"
					800mm	31.50"	730mm	28.74"	800mm	31.50"	482.6mm	19"
					1000mm	39.37'	930mm	36.61'	800mm	31.50"	482.6mm	19"
36U	1685mm	66.34"	1602mm	63.07"	600mm	23.62"	530mm	20.87"	800mm	31.50"	482.6mm	19"
					800mm	31.50"	730mm	28.74"	800mm	31.50"	482.6mm	19"
					1000mm	39.37'	930mm	36.61'	800mm	31.50"	482.6mm	19"
42U	1950mm	76.77"	1869mm	73.58"	600mm	23.62"	530mm	20.87"	800mm	31.50"	482.6mm	19"
					800mm	31.50"	730mm	28.74"	800mm	31.50"	482.6mm	19"
					1000mm	39.37'	930mm	36.61'	800mm	31.50"	482.6mm	19"

Note : Rack Height Including Castor Wheels & Depth Including Front Door & Rear Door
Rack Height Can Be Slightly Plus or Minus

Features of Floor Standing Server & Networking Rack

- Sturdy steel welded construction.
- 1.0mm thick powder coated steel frame & 2 mm thick mounting angles & depth Channel 3 Pair, & 19" equipment mounting angle 2 pairs.
- Advanced cooling techniques to eliminate the heat build up associated with the increasing heat density.
- Vented on all panels for excellent air circulation characteristics.
- Front toughened Glass door & rear steel door and detachable side panels with key lock & perforation provision.
- Top panel features cut-out for fans and cut-out for cable entry.
- Maximum static loading capacity up to 500 kg on castor wheels & on base frames 750 kg.
- Available in two colors black and light grey.

Accessories

Cable Managers (1U /2U)	: Horizontal & Vertical MS & PVC
Fix shelf /sliding shelf	: 475mm/ 575mm/ 725mm
Support Angles	: 475mm /575mm/725mm
Key board tray	: sliding & rotary
Fan Housing Units	: 2 Fans & 4 Fans Positioning Option.
Power Distribution Unit	: Horizontal & vertical 6 & 12 point (5/15Amp option.)
Blanking Panels	: 1U/2U/3U/4U
Equipment Fastener	: Hardware set (packet of 10 cage nuts)

Rack Sizes

Height Available	: 18U, 22U, 24U, 27U, 32U, 36U, 42U.
Width	: 600mm, 800mm, 1000mm
Depth	: 600mm, 800mm, 1000mm



Open Frame Rack

Open Rack Series consist of floor standing two post & four post open rack incorporating advance features. These are designed & Engineered specially to address the need of tower servers, switches & telecom or voice mail equipment, patch cord, patch panels, cable distribution and management etc. Two & Four Post open rack frame is high quality fine styling & space saving design.



Features

Height available: 24U, 27U, 32U, 36U, 42U, 45U

Width option: 19 inch, 21 inch, 23 inch through increasing and reducing mounting channel.

Standard Accessories: Cantilever Tray, Double sided Trays, Center mounting tray, Power Distribution Unit, Equipment Mounting Hardware, Cable Managers, Earthing bar, grounding plates, Ladder etc.

Usability: These Racks are most Suitable for Computer Networking, CCTV DVR, Audio Visual Equipments, test and measurement equipment, diagnostic equipment, TV Radio Broadcasting Equipments and other 19" Electronic and telecommunication equipments

Construction: CRCA Steel 2.0mm thick Frame construction, welded and dismantle option, integrated ground mounting plate with hardware

Static Load Capacity: up to 250 – 350 Kg

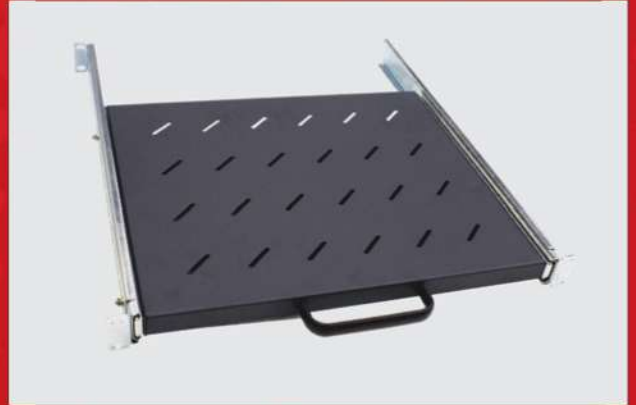
Accessories for Floor Standing Server & Networking Rack

- Fan housing units 2 & 4 fan position
- FAN 230V AC 90 CFM
- Power Distribution unit 6 point 5 Amp Round Pin
- Powder Distribution unit 6 point 5 Amp Universal socket
- Powder Distribution unit 6 point 5/15 amp
- Power distribution unit 12 point 5 /15 amp with MCB 32amp.
- Power distribution unit 12 point 5 amp Universal socket.
- 1U Cantilever Tray /255mm
- 19" fixed Shelf 375mm Depth
- 19" fixed Shelf 475mm Depth
- 19" fixed / Sliding Shelf 575mm Depth
- 19" fixed / Sliding Shelf 627mm Depth
- 19" Fixed / Sliding Shelf 725mm Depth
- 19" Key board Tray –Sliding /rotary.
- 19" Support angles (per Pair) 475mm/627mm/725mm
- 19" Blanking Panels (Metal) available in different size like 1U, 2U, 3U, 4U, etc
- Horizontal Cable Manger 1U Metal with loops
- Vertical Cable Channel (MS) with loop 1U wide height 42U.
- Hardware Packet (packet of 10 cage nuts)
- Coupling hardware
- Earth Continuity kit
- Castor Wheels with brakes (set of 4 nos)
- Cable Manger 1U PVC Horizontal (40x60)
- Vertical Cable manger PVC (100x100mm Depth)
- Vertical Cable manager PVC (150x150mm Depth)
- Ladder 1 mtr / 2 mtr for open frame two post delta racks.
- Ladder Accessories like:-
- Runway joint bracket straight (set of 2)
- Runway joint bracket right angle (set of 2)
- Wall Bracket (set of 4)
- J-Hook (set of 4)
- Central Plate

Accessories



Fixed Shelf/Tray



Sliding Tray



Cage Nut



Fan Housing Unit (FHU)



Power Distribution Unit



Castor Wheels



Cable Manager (MS & PVC)